

Industrial Ethernet Switches

NS-205



NS-200FT



NS-115



NS-105



NS-108



NEW!!

NEW!!

Features

NS-115 SERIES/NS-200FT 10/100M with Fiber Connector	NS-105/NS-108/NS-205 Ethernet Switching Hub
Complies with IEEE-802.3 10Base-T and IEEE-802.3u 100Base-FX standards	Complies with IEEE 802.3 10Base-T, IEEE 802.3u 100Base-TX, and IEEE 802.3x flow control standards
Provides 4 10/100Mbps switching ports and 1 100Base-FX switched port	Provides 5 Ports (NS-105/NS-205) Provides 8 Ports (NS-108)
Supports duplex type selector for setting the fiber port to either full or half duplex	Full/half duplex operation for each port
Full/half duplex operation for each port	Supports 1K MAC addresses
Support 1K MAC addresses and automatic MAC address learning and aging	Non-blocking switching
Non-blocking switching fabric	Compact design with small footprint
Supports full-duplex flow control(IEEE-802.3x)	
Compact metal chassis design	

Specifications

	NS-115 SERIES	NS-205
Port configuration	Multimode ST,Multimode SC Multimode 62.5/125μm fiber cable(max.distance:2km)	Auto-negotiation for connection speed and duplex type
Connector & Cables	Shielded RJ-45 jack 10Base-T Cat.3,4,5 UTP cable(100m max.) 100Base-TX Cat.5 UTP cable(100m max.)	10Base-T Cat.3,4,5 UTP cable(100m max.) 100Base-T Cat.5 UTP cable(100m max.)
Filtering address	Unicast/Multicast/Broadcast address:1K MAC addresses per unit	Unicast/Multicast/Broadcast address:1K MAC addresses per unit
Forwarding rate	14,880pps for Ethernet, 148,800pps for Fast Ethernet	14,880pps for Ethernet, 148,800pps for Fast Ethernet
Filtering rate	14,880pps for Ethernet, 148,800pps for Fast Ethernet	14,880pps for Ethernet, 148,800pps for Fast Ethernet
RAM Buffers	128KB	2MB
LEDs	-Power status -10/100,Link/Activity, Duplex/Collision status for each TP port -Link/Activity, Duplex/Collision status for fiber port	-Power status -10/100,Link/Activity, status for each port
Environment	Temperature: 0°C to 50°C Relative Humidity : 10% to 90% non-condensing	Temperature: -30°C to +75°C Relative Humidity : 10% to 90% non-condensing
Dimensions	160mm x 70mm x 125mm	32.3mm x 99mm x 77.5mm
Power	AC85~230V DC10~30V 7W	DC10~30V 1.3W

Ordering Information

Model	Description	Fiber Mode	Connector	Power input
NS-115FT	1-Port Fiber Optic ,4-port 10/100M RJ-45 connector	MultiMode	ST	DC10~30V
NS-115FT-AC	1-Port Fiber Optic ,4-port 10/100M RJ-45 connector	MultiMode	ST	AC85~230V
NS-115FC	1-Port Fiber Optic ,4-port 10/100M RJ-45 connector	MultiMode	SC	DC10~30V
NS-115FC-AC	1-Port Fiber Optic ,4-port 10/100M RJ-45 connector	MultiMode	SC	AC85~230V
NS-200FT	1-Port Fiber Optic ,1-port 10/100M RJ-45 connector	MultiMode	ST	DC10~30V
NS-105	5-Port Industrial Ethernet Switch			DC10~30V
NS-108	8-Port Industrial Ethernet Switch			DC10~30V
NS-205	5-Port Industrial Ethernet Switch			DC10~30V

Industrial Ethernet Fiber Converter



NC-10TF



NC-200TF

Features

- Complies with 802.3 10Base-T and 10Base-FX standards for NC-10TF
- Complies with 802.3 100Base-T and 100Base-FX standards for NC-200TF
- Provides media conversion from UTP to Fiber Optic media types
- Extends network span from 2km(multimode fiber)
- Provides a push button to set crossover function for the TP port
- Interoperable with other 10Base media converters, 10Base, 10/100Base-T NICs, hubs or switches
- Provides LEDs for easy network monitoring
- Supports a variety of fiber optic connectors including duplex multimode ST, SC

Specifications

	NC-200TF Series	NC-10TF Series
Standard	IEEE-802.3 Ethernet 100Base-T and 100Base-FX	IEEE-802.3 Ethernet 10Base-T and 10Base-FX
Fiber Port	MultiMode ST MultiMode SC	MultiMode ST MultiMode SC
Fiber Cable	MultiMode 850nm 62.5/125 μ m fiber cable(max.distance:2km)	MultiMode 850nm 62.5/125 μ m fiber cable(max.distance:2km)
TP Port Cable	Shielded RJ-45 jack Cat.5 UTP cable(100m max.)	Shielded RJ-45 jack Cat.3.4.5 UTP cable(100m max.)
LEDs	-Power status -Link and receive status for TP port -Link and receive status for fiber port	-Power status -Link and receive status for TP port -Link and receive status for fiber port
Environment	Temperature: 0°C to 50°C Relative Humidity : 10% to 90% non-condensing	Temperature: 0°C to 50°C Relative Humidity : 10% to 90% non-condensing
Dimensions	150mm x 26mm x 125mm	150mm x 26mm x 125mm
Power	DC10~30V	DC10~30V

Ordering Information

Model	Description	Fiber Mode	Connector	Power input
NC-200TFT	Fiber Optic to 100M RJ-45 Connector	MultiMode	ST	DC10~30V
NC-200TFC	Fiber Optic to 100M RJ-45 Connector	MultiMode	SC	DC10~30V
NC-10TFT	Fiber Optic to 10M RJ-45 Connector	MultiMode	ST	DC10~30V
NC-10TFC	Fiber Optic to 10M RJ-45 Connector	MultiMode	SC	DC10~30V

Ordering INFORMATION

A		I-7050A / I-7050AD	P5-21
ACE-540A / DIN-540A	P5-25	I-7051 / I-7051D	P5-21
ANT-15YG	P5-27	I-7052 / I-7052D	P5-21
ANT-3	P5-27	I-7053 / I-7053D	P5-22
ANT-8	P5-27	I-7055 / I-7055D	P5-22
ANT-900A	P5-27	I-7058 / I-7058D	P5-22
Application	P7-5	I-7060 / I-7060D	P5-22
C		I-7063 / I-7063D	P5-22
CA-0945	P5-28	I-7063A / I-7063AD	P5-23
CA-3813	P5-28	I-7063B / I-7063BD	P5-23
CA-5810	P5-28	I-7065 / I-7065D	P5-23
D		I-7065A / I-7065AD	P5-23
DN-PR4	P5-25	I-7065B / I-7065BD	P5-24
DN-SSR4	P5-25	I-7066 / I-7066D	P5-24
DP-1200	P5-25	I-7067 / I-7067D	P5-24
DP-640/DP-660/DP-665	P5-25	I-7080 / I-7080D	P5-24
G		I-7188/256;I-7188D/256	P4-3
GM29	P7-4	I-7188/512;I-7188D/512	P4-3
I		I-7188EA / I-7188EAD	P4-16
I-2541	P5-14	I-7188EG / I-7188EGD	P4-17
I-3625-ENC	P5-27	I-7188EX / I-7188EXD	P4-14
I-7011 / I-7011D	P5-15	I-7188XA / I-7188XAD	P4-4
I-7011P / I-7011PD	P5-15	I-7188XB / I-7188XBD	P4-5
I-7012 / I-7012D	P5-15	I-7188XC / I-7188XCD	P4-7
I-7012F / I-7012FD	P5-15	I-7188XG / I-7188XGD	P4-6
I-7013 / I-7013D	P5-15	I-7510 / I-7510A	P5-14
I-7014D	P5-16	I-7510AR	P5-14
I-7015	P5-16	I-7513	P5-14
I-7016 / I-7016D	P5-16	I-7520 / I-7520R	P5-13
I-7016P / I-7016PD	P5-16	I-7520A / I-7520AR	P5-13
I-7017	P5-17	I-7530-G	P5-14
I-7017C	P5-17	I-7551	P5-13
I-7017F	P5-17	I-7560	P5-12
I-7017R	P5-17	I-7561	P5-12
I-7017RC	P5-17	I-7563	P5-12
I-7018	P5-18	I-8017H / I-8017H-G	P3-26
I-7018BL	P5-18	I-8017HS/I8017HS-G	P3-26
I-7018P	P5-18	I-8024 / I-8024-G	P3-26
I-7018R	P5-18	I-8037 / I-8037-G	P3-22
I-7019R	P5-18	I-8040 / I-8040-G	P3-22
I-7021	P5-19	I-8041 / I-8041-G	P3-22
I-7021P	P5-19	I-8042 / I-8042-G	P3-22
I-7022	P5-19	I-8050 / I-8050-G	P3-22
I-7024	P5-19	I-8051 / I-8051-G	P3-23
I-7033 / I-7033D	P5-16	I-8052 / I-8052-G	P3-23
I-7041 / I-7041D	P5-20		
I-7042 / I-7042D	P5-20		
I-7043 / I-7043D	P5-20		
I-7044 / I-7044D	P5-20		
I-7045 / I-7045D	P5-21		
I-7050 / I-7050D	P5-21		

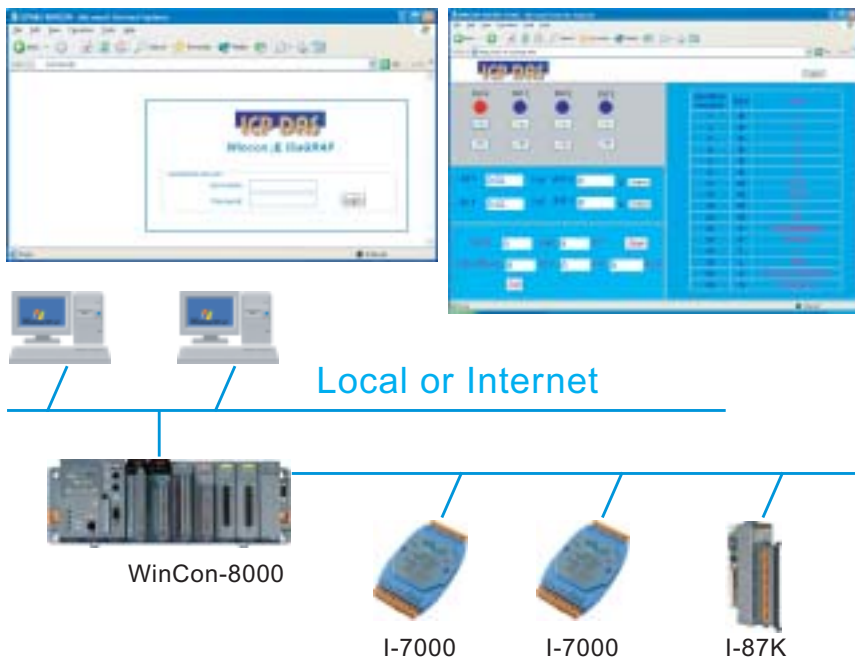
Ordering INFORMATION

I-8053 / I-8053-G	P3-23	I-87063 / I-87063-G	P3-32
I-8054 / I-8054-G	P3-23	I-87064 / I-87064-G	P3-33
I-8055 / I-8055-G	P3-23	I-87065 / I-87065-G	P3-33
I-8056 / I-8056-G	P3-24	I-87066 / I-87066-G	P3-33
I-8057 / I-8057-G	P3-24	I-87068 / I-87068-G	P3-33
I-8058 / I-8058-G	P3-24	I-87069 / I-87069-G	P3-33
I-8060 / I-8060-G	P3-24	I-87082 / I-87082-G	P3-36
I-8063 / I-8063-G	P3-24	I-87K4 / I-87K4-G	P3-19
I-8064 / I-8064-G	P3-25	I-87K5 / I-87K5-G	P3-19
I-8065 / I-8065-G	P3-25	I-87K8 / I-87K8-G	P3-19
I-8066 / I-8066-G	P3-25	I-87K9 / I-87K9-G	P3-19
I-8068 / I-8068-G	P3-25	I-8810/I-8810-G	P3-7
I-8069 / I-8069-G	P3-25	I-8811/I-8811-G	P3-7
I-8072 / I-8072-G	P3-27	I-8817 / I-8817-G	P3-15
I-8073 / I-8073-G	P3-28	I-8818 / I-8818-G	P3-17
I-8074 / I-8074-G	P3-28	I-8820 / I-8820-G	P3-13
I-8077 / I-8077-G	P3-28	I-8821 / I-8821-G	P3-13
I-8080 / I-8080-G	P3-27	I-8830 / I-8830-G	P3-8
I-8090 / I-8090-G	P3-27	I-8831 / I-8831-G	P3-8
I-8091 / I-8091-G	P3-27	I-8837 / I-8837-G	P3-15
I-8112 / I-8112-G	P3-29	I-8838 / I-8838-G	P3-17
I-8114 / I-8114-G	P3-29	I-8KE4/I-8KE4-G	P3-11
I-8142 / I-8142-G	P3-29	I-8KE8/I-8KE8-G	P3-11
I-8142i / I-8142i-G	P3-29	I-950-ENC	P5-27
I-8144 / I-8144-G	P3-29	iVIEW-100-ISaGRAF	P4-8
I-8410/I-8410-G	P3-7	K	
I-8411/I-8411-G	P3-7	KA-52F / DIN-KA52F	P5-25
I-8417 / I-8417-G	P3-15	M	
I-8418 / I-8418-G	P3-17	M1206	P7-4
I-8420 / I-8420-G	P3-13	M-7017-G/M-7017R-G/M-7018-G/	P5-29
I-8421 / I-8421-G	P3-13	M-7018R-G/M-7019R-G/	
I-8430 / I-8430-G	P3-8	M-7060-G/M-7060D-G	
I-8431 / I-8431-G	P3-8	MMICON	P5-26
I-8437 / I-8437-G	P3-15	N	
I-8438 / I-8438-G	P3-17	NC-10TFC	P8-2
I-87013 / I-87013-G	P3-35	NC-10TFT	P8-2
I-87016 / I-87016-G	P3-35	NC-200TFC	P8-2
I-87017 / I-87017-G	P3-35	NC-200TFT	P8-2
I-87018 / I-87018-G	P3-35	NHW6110	P7-2
I-87022 / I-87022-G	P3-36	NHW660	P7-2
I-87024 / I-87024-G	P3-36	NS-105	P8-1
I-87026 / I-87026-G	P3-36	NS-108	P8-1
I-87040 / I-87040-G	P3-31	NS-115FC	P8-1
I-87041 / I-87041-G	P3-31	NS-115FC-AC	P8-1
I-87051 / I-87051-G	P3-31	NS-115FT	P8-1
I-87052 / I-87052-G	P3-31	NS-115FT-AC	P8-1
I-87053 / I-87053-G	P3-31		
I-87054 / I-87054-G	P3-32		
I-87055 / I-87055-G	P3-32		
I-87057 / I-87057-G	P3-32		
I-87058 / I-87058-G	P3-32		

Ordering INFORMATION

NS-200FT		P8-1	X107			P4-24
NS-205		P8-1	X109			P4-24
NWA0106		P7-3	X110			P4-24
NWA0208		P7-3	X111			P4-24
NWA0214		P7-3	X116			P4-24
P			X119	P4-24	P4-27	P4-29
PCISA-7520AR		P5-13	X200			P4-27
PCISA-7520R		P5-13	X201			P4-28
PW-3090		P6-2	X202			P4-24
PWR-24/110		P5-25	X203			P4-24
PWR-24/220F		P5-25	X300			P4-28
PWR-24/230R		P5-25	X301			P4-28
R			X302			P4-28
RM-10X / 20X		P5-25	X303			P4-25
RM-38		P5-28	X304			P4-25
RM-48.61 / RM-48.62		P5-28	X305			P4-25
S			X306			P4-28
SG-3011		P6-1	X307			P4-25
SG-3013		P6-1	X308			P4-25
SG-3016		P6-1	X309			P4-25
SG-3071		P6-2	X310			P4-25
SG-3081		P6-2	X400			P4-28
SST-2450		P5-27	X500		P4-28	P4-29
SST-900EXT		P5-27	X501			P4-28
T			X502			P4-28
T-316		P7-2	X503			P4-25
Touch 506S/Touch 506L/Touch 510T		P5-26	X504			P4-25
W			X505			P4-25
W-8031-G / W-8331-G		P2-4	X506			P4-25
W-8036-G / W-8336-G		P2-5	X507			P4-25
W-8037-G / W-8337-G		P2-5	X508			P4-26
W-8039-G / W-8339-G		P2-5	X509			P4-26
W-8731-G		P2-4	X510			P4-26
W-8736-G / W-8737-G / W-8739-G		P2-5	X510-128			P4-26
WinCon Web HMI		P8-6	X511			P4-26
WINKIT-01 / 02 / 03		P5-30	X518			P4-26
X			X560	P4-26	P4-28	P4-29
X000	P4-27	P4-29	X600 / X601	P4-26	P4-28	P4-29
X001	P4-27	P4-29	X607	P4-26	P4-28	P4-29
X002		P4-24	X608	P4-26	P4-28	P4-29
X003	P4-27	P4-29	X700			P4-26
X004		P4-24	X701			P4-26
X005		P4-24				
X006		P4-24				
X100		P4-27				
X101		P4-27				
X102		P4-27				
X103		P4-27				
X104		P4-27				
X105		P4-27				
X106		P4-27				

Software *WinCon Web HMI*



Main Features

- **No extra HMI software need.** WinCon Web HMI is build by user's own HTML editor. For example, Notepad or FrontPage, or ...
- Allow user to save his own web pages in the WinCon controller (HTML format) .
- Other PCs can use Internet Explorer to browse I/O & control data in the WinCon controller.
- Support three levels "User ID" & "Password" security.
- The web pages of the WinCon Web HMI can exchange data with the ISaGRAF program (Hardware should be W-8037/8337/8737 or W-8036/8336/8736)
- The web pages of the WinCon Web HMI can exchange data with the "Modbus Server" (Hardware: Other WinCon controllers with "Modbus Server" enabled)

Controller supported

- W-8037 / 8337 / 8737 (ISaGRAF controller)
- W-8036 / 8336 / 8736 (Indusoft & ISaGRAF controller)
- Other WinCon controllers with "Modbus Server" enabled