

# Industrial Ethernet Switches

NS-205



NS-200FT



NS-115



NS-105



NS-108



NEW!!

NEW!!

## Features

NS-115 SERIES/NS-200FT 10/100M with Fiber Connector	NS-105/NS-108/NS-205 Ethernet Switching Hub
Complies with IEEE-802.3 10Base-T and IEEE-802.3u 100Base-FX standards	Complies with IEEE 802.3 10Base-T, IEEE 802.3u 100Base-TX, and IEEE 802.3x flow control standards
Provides 4 10/100Mbps switching ports and 1 100Base-FX switched port	Provides 5 Ports (NS-105/NS-205) Provides 8 Ports (NS-108)
Supports duplex type selector for setting the fiber port to either full or half duplex	Full/half duplex operation for each port
Full/half duplex operation for each port	Supports 1K MAC addresses
Support 1K MAC addresses and automatic MAC address learning and aging	Non-blocking switching
Non-blocking switching fabric	Compact design with small footprint
Supports full-duplex flow control(IEEE-802.3x)	
Compact metal chassis design	

## Specifications

	NS-115 SERIES	NS-205
<b>Port configuration</b>	Multimode ST,Multimode SC Multimode 62.5/125μm fiber cable(max.distance:2km)	Auto-negotiation for connection speed and duplex type
<b>Connector &amp; Cables</b>	Shielded RJ-45 jack 10Base-T Cat.3,4,5 UTP cable(100m max.) 100Base-TX Cat.5 UTP cable(100m max.)	10Base-T Cat.3,4,5 UTP cable(100m max.) 100Base-T Cat.5 UTP cable(100m max.)
<b>Filtering address</b>	Unicast/Multicast/Broadcast address:1K MAC addresses per unit	Unicast/Multicast/Broadcast address:1K MAC addresses per unit
<b>Forwarding rate</b>	14,880pps for Ethernet, 148,800pps for Fast Ethernet	14,880pps for Ethernet, 148,800pps for Fast Ethernet
<b>Filtering rate</b>	14,880pps for Ethernet, 148,800pps for Fast Ethernet	14,880pps for Ethernet, 148,800pps for Fast Ethernet
<b>RAM Buffers</b>	128KB	2MB
<b>LEDs</b>	-Power status -10/100,Link/Activity, Duplex/Collision status for each TP port -Link/Activity, Duplex/Collision status for fiber port	-Power status -10/100,Link/Activity, status for each port
<b>Environment</b>	Temperature: 0°C to 50°C Relative Humidity : 10% to 90% non-condensing	Temperature: -30°C to +75°C Relative Humidity : 10% to 90% non-condensing
<b>Dimensions</b>	160mm x 70mm x 125mm	32.3mm x 99mm x 77.5mm
<b>Power</b>	AC85~230V DC10~30V 7W	DC10~30V 1.3W

## Ordering Information

Model	Description	Fiber Mode	Connector	Power input
NS-115FT	1-Port Fiber Optic ,4-port 10/100M RJ-45 connector	MultiMode	ST	DC10~30V
NS-115FT-AC	1-Port Fiber Optic ,4-port 10/100M RJ-45 connector	MultiMode	ST	AC85~230V
NS-115FC	1-Port Fiber Optic ,4-port 10/100M RJ-45 connector	MultiMode	SC	DC10~30V
NS-115FC-AC	1-Port Fiber Optic ,4-port 10/100M RJ-45 connector	MultiMode	SC	AC85~230V
NS-200FT	1-Port Fiber Optic ,1-port 10/100M RJ-45 connector	MultiMode	ST	DC10~30V
NS-105	5-Port Industrial Ethernet Switch			DC10~30V
NS-108	8-Port Industrial Ethernet Switch			DC10~30V
NS-205	5-Port Industrial Ethernet Switch			DC10~30V

# Industrial Ethernet Fiber Converter



NC-10TF



NC-200TF

## Features

- Complies with 802.3 10Base-T and 10Base-FX standards for NC-10TF
- Complies with 802.3 100Base-T and 100Base-FX standards for NC-200TF
- Provides media conversion from UTP to Fiber Optic media types
- Extends network span from 2km(multimode fiber)
- Provides a push button to set crossover function for the TP port
- Interoperable with other 10Base media converters, 10Base, 10/100Base-T NICs, hubs or switches
- Provides LEDs for easy network monitoring
- Supports a variety of fiber optic connectors including duplex multimode ST, SC

## Specifications

	NC-200TF Series	NC-10TF Series
<b>Standard</b>	IEEE-802.3 Ethernet 100Base-T and 100Base-FX	IEEE-802.3 Ethernet 10Base-T and 10Base-FX
<b>Fiber Port</b>	MultiMode ST MultiMode SC	MultiMode ST MultiMode SC
<b>Fiber Cable</b>	MultiMode 850nm 62.5/125μm fiber cable(max.distance:2km)	MultiMode 850nm 62.5/125μm fiber cable(max.distance:2km)
<b>TP Port Cable</b>	Shielded RJ-45 jack Cat.5 UTP cable(100m max.)	Shielded RJ-45 jack Cat.3.4.5 UTP cable(100m max.)
<b>LEDs</b>	-Power status -Link and receive status for TP port -Link and receive status for fiber port	-Power status -Link and receive status for TP port -Link and receive status for fiber port
<b>Environment</b>	Temperature: 0°C to 50°C Relative Humidity : 10% to 90% non-condensing	Temperature: 0°C to 50°C Relative Humidity : 10% to 90% non-condensing
<b>Dimensions</b>	150mm x 26mm x 125mm	150mm x 26mm x 125mm
<b>Power</b>	DC10~30V	DC10~30V

## Ordering Information

Model	Description	Fiber Mode	Connector	Power input
NC-200TFT	Fiber Optic to 100M RJ-45 Connector	MultiMode	ST	DC10~30V
NC-200TFC	Fiber Optic to 100M RJ-45 Connector	MultiMode	SC	DC10~30V
NC-10TFT	Fiber Optic to 10M RJ-45 Connector	MultiMode	ST	DC10~30V
NC-10TFC	Fiber Optic to 10M RJ-45 Connector	MultiMode	SC	DC10~30V

# Ordering INFORMATION

<b>A</b>		I-7050 / I-7050D□	P5-21
ACE-540A / DIN-540A□	P5-25	I-7050A / I-7050AD□	P5-21
ANT-12P□	P5-27	I-7051 / I-7051D□	P5-21
ANT-3D□	P5-27	I-7052 / I-7052D□	P5-21
ANT-8□	P5-27	I-7053 / I-7053D□	P5-22
ANT-900A□	P5-27	I-7055 / I-7055D□	P5-22
Application□	P7-5	I-7058 / I-7058D□	P5-22
<b>C</b>		I-7060 / I-7060D□	P5-22
CA-0945□	P5-28	I-7063 / I-7063D□	P5-22
CA-3813□	P5-28	I-7063A / I-7063AD□	P5-23
CA-5810□	P5-28	I-7063B / I-7063BD□	P5-23
<b>D</b>		I-7065 / I-7065D□	P5-23
DN-PR4□	P5-25	I-7065A / I-7065AD□	P5-23
DN-SSR4□	P5-25	I-7065B / I-7065BD□	P5-24
DP-1200□	P5-25	I-7066 / I-7066D□	P5-24
DP-640/DP-660/DP-665□	P5-25	I-7067 / I-7067D□	P5-24
<b>G</b>		I-7080 / I-7080D□	P5-24
GM29□	P7-4	I-7188/256;I-7188D/256□	P4-3
GM-305□	P7-4	I-7188/512;I-7188D/512□	P4-3
<b>I</b>		I-7188EA / I-7188EAD□	P4-16
I-2541□	P5-14	I-7188EG / I-7188EGD□	P4-17
I-3625-ENC□	P5-27	I-7188EX / I-7188EXD□	P4-14
I-7011 / I-7011D□	P5-15	I-7188XA / I-7188XAD□	P4-4
I-7011P / I-7011PD□	P5-15	I-7188XB / I-7188XBD□	P4-5
I-7012 / I-7012D□	P5-15	I-7188XC / I-7188XCD□	P4-7
I-7012F / I-7012FD□	P5-15	I-7188XG / I-7188XGD□	P4-6
I-7013 / I-7013D□	P5-15	I-7510 / I-7510A□	P5-14
I-7014D□	P5-16	I-7510AR□	P5-14
I-7015□	P5-16	I-7513□	P5-14
I-7016 / I-7016D□	P5-16	I-7520 / I-7520R□	P5-13
I-7016P / I-7016PD□	P5-16	I-7520A / I-7520AR□	P5-13
I-7017□	P5-17	I-7530-G□	P5-14
I-7017C□	P5-17	I-7551□	P5-13
I-7017F□	P5-17	I-7560□	P5-12
I-7017R□	P5-17	I-7561□	P5-12
I-7017RC□	P5-17	I-7563□	P5-12
I-7018□	P5-18	I-8017H / I-8017H-G□	P3-26
I-7018BL□	P5-18	I-8024 / I-8024-G□	P3-26
I-7018P□	P5-18	I-8037 / I-8037-G□	P3-22
I-7018R□	P5-18	I-8040 / I-8040-G□	P3-22
I-7019R□	P5-18	I-8041 / I-8041-G□	P3-22
I-7021□	P5-19	I-8042 / I-8042-G□	P3-22
I-7021P□	P5-19	I-8050 / I-8050-G□	P3-22
I-7022□	P5-19	I-8051 / I-8051-G□	P3-23
I-7024□	P5-19	I-8052 / I-8052-G□	P3-23
I-7033 / I-7033D□	P5-16		
I-7041 / I-7041D□	P5-20		
I-7042 / I-7042D□	P5-20		
I-7043 / I-7043D□	P5-20		
I-7044 / I-7044D□	P5-20		
I-7045 / I-7045D□	P5-21		

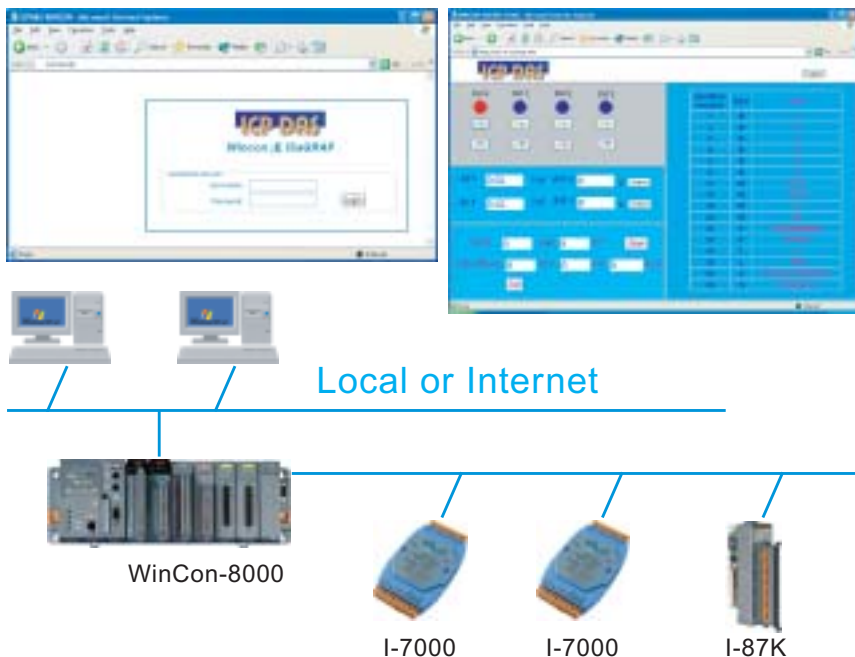
# Ordering INFORMATION

I-8053 / I-8053-G	P3-23	I-87063 / I-87063-G	P3-32
I-8054 / I-8054-G	P3-23	I-87064 / I-87064-G	P3-33
I-8055 / I-8055-G	P3-23	I-87065 / I-87065-G	P3-33
I-8056 / I-8056-G	P3-24	I-87066 / I-87066-G	P3-33
I-8057 / I-8057-G	P3-24	I-87068 / I-87068-G	P3-33
I-8058 / I-8058-G	P3-24	I-87069 / I-87069-G	P3-33
I-8060 / I-8060-G	P3-24	I-87082 / I-87082-G	P3-36
I-8063 / I-8063-G	P3-24	I-87K4 / I-87K4-G	P3-19
I-8064 / I-8064-G	P3-25	I-87K5 / I-87K5-G	P3-19
I-8065 / I-8065-G	P3-25	I-87K8 / I-87K8-G	P3-19
I-8066 / I-8066-G	P3-25	I-87K9 / I-87K9-G	P3-19
I-8068 / I-8068-G	P3-25	I-8810/I-8810-G	P3-7
I-8069 / I-8069-G	P3-25	I-8811/I-8811-G	P3-7
I-8072 / I-8072-G	P3-27	I-8817 / I-8817-G	P3-15
I-8073 / I-8073-G	P3-28	I-8818 / I-8818-G	P3-17
I-8074 / I-8074-G	P3-28	I-8820 / I-8820-G	P3-13
I-8077 / I-8077-G	P3-28	I-8821 / I-8821-G	P3-13
I-8080 / I-8080-G	P3-27	I-8830 / I-8830-G	P3-8
I-8090 / I-8090-G	P3-27	I-8831 / I-8831-G	P3-8
I-8091 / I-8091-G	P3-27	I-8837 / I-8837-G	P3-15
I-8112 / I-8112-G	P3-29	I-8838 / I-8838-G	P3-17
I-8114 / I-8114-G	P3-29	I-8KE4/I-8KE4-G	P3-11
I-8142 / I-8142-G	P3-29	I-8KE8/I-8KE8-G	P3-11
I-8142i / I-8142i-G	P3-29	I-950-ENC	P5-27
I-8144 / I-8144-G	P3-29	iVIEW-100-ISaGRAF	P4-8
I-8410/I-8410-G	P3-7	<b>K</b>	
I-8411/I-8411-G	P3-7	KA-52F / DIN-KA52F	P5-25
I-8417 / I-8417-G	P3-15	<b>M</b>	
I-8418 / I-8418-G	P3-17	M1206	P7-4
I-8420 / I-8420-G	P3-13	M-7017-G/M-7017R-G/M-7018-G/	P5-29
I-8421 / I-8421-G	P3-13	M-7018R-G/M-7019R-G/	
I-8430 / I-8430-G	P3-8	M-7060-G/M-7060D-G	
I-8431 / I-8431-G	P3-8	MMICON	P5-26
I-8437 / I-8437-G	P3-15	<b>N</b>	
I-8438 / I-8438-G	P3-17	NC-10TFC	P8-2
I-87013 / I-87013-G	P3-35	NC-10TFT	P8-2
I-87016 / I-87016-G	P3-35	NC-200TFC	P8-2
I-87017 / I-87017-G	P3-35	NC-200TFT	P8-2
I-87018 / I-87018-G	P3-35	NHW6110	P7-2
I-87022 / I-87022-G	P3-36	NHW650	P7-2
I-87024 / I-87024-G	P3-36	NHW660	P7-2
I-87026 / I-87026-G	P3-36	NS-105	P8-1
I-87040 / I-87040-G	P3-31	NS-108	P8-1
I-87041 / I-87041-G	P3-31	NS-115FC	P8-1
I-87051 / I-87051-G	P3-31	NS-115FC-AC	P8-1
I-87052 / I-87052-G	P3-31	NS-115FT	P8-1
I-87053 / I-87053-G	P3-31	NS-115FT-AC	P8-1
I-87054 / I-87054-G	P3-32		
I-87055 / I-87055-G	P3-32		
I-87057 / I-87057-G	P3-32		
I-87058 / I-87058-G	P3-32		

# Ordering INFORMATION

NS-200FT□		P8-1	X106□			P4-27
NS-205□		P8-1	X107□			P4-24
NWA0106□		P7-3	X109□			P4-24
NWA0208□		P7-3	X110□			P4-24
NWA0214□		P7-3	X111□			P4-24
P			X116□			P4-24
P-380A□		P7-2	X119□	P4-24	P4-27	P4-29
PCISA-7520AR□		P5-13	X200□			P4-27
PCISA-7520R□		P5-13	X201□			P4-28
PW-3090□		P6-2	X202□			P4-24
PWR-24/110□		P5-25	X203□			P4-24
PWR-24/220F□		P5-25	X300□			P4-28
PWR-24/230R□		P5-25	X301□			P4-28
R			X302□			P4-28
RM-10X / 20X□		P5-25	X303□			P4-25
RM-38□		P5-28	X304□			P4-25
RM-48.61 / RM-48.62□		P5-28	X305□			P4-25
S			X306□			P4-28
SG-3011□		P6-1	X307□			P4-25
SG-3013□		P6-1	X308□			P4-25
SG-3016□		P6-1	X309□			P4-25
SG-3071□		P6-2	X310□			P4-25
SG-3081□		P6-2	X400□			P4-28
SST-2450□		P5-27	X500 □		P4-28	P4-29
SST-900EXT□		P5-27	X501□			P4-28
T			X502□			P4-28
T-316□		P7-2	X503□			P4-25
Touch 506S/Touch 506L/Touch 510T□		P5-26	X504□			P4-25
W			X505□			P4-25
W-8031-G / W-8331-G□		P2-4	X506□			P4-25
W-8036-G / W-8336-G□		P2-5	X507□			P4-25
W-8037-G / W-8337-G□		P2-5	X508□			P4-26
W-8039-G / W-8339-G□		P2-5	X509□			P4-26
W-8731-G□		P2-4	X510□			P4-26
W-8736-G / W-8737-G / W-8739-G□		P2-5	X510-128□			P4-26
WinCon Web HMI□		P8-6	X511□			P4-26
WINKIT-01 / 02 / 03□		P5-30	X518□			P4-26
X			X560□	P4-26	P4-28	P4-29
X000□	P4-27	P4-29	X600 / X601□	P4-26	P4-28	P4-29
X001□	P4-27	P4-29	X607□	P4-26	P4-28	P4-29
X002□		P4-24	X608□	P4-26	P4-28	P4-29
X003□	P4-27	P4-29	X700□			P4-26
X004□		P4-24	X701□			P4-26
X005□		P4-24				
X006□		P4-24				
X100□		P4-27				
X101□		P4-27				
X102□		P4-27				
X103□		P4-27				
X104□		P4-27				
X105□		P4-27				

# Software *WinCon Web HMI*



## Main Features

- **No extra HMI software need.** WinCon Web HMI is build by user's own HTML editor. For example, Notepad or FrontPage, or ...
- Allow user to save his own web pages in the WinCon controller (HTML format) .
- Other PCs can use Internet Explorer to browse I/O & control data in the WinCon controller.
- Support three levels "User ID" & "Password" security.
- The web pages of the WinCon Web HMI can exchange data with the ISaGRAF program (Hardware should be W-8037/8337/8737 or W-8036/8336/8736)
- The web pages of the WinCon Web HMI can exchange data with the "Modbus Server" (Hardware: Other WinCon controllers with "Modbus Server" enabled)

## Controller supported

- W-8037 / 8337 / 8737 (ISaGRAF controller)
- W-8036 / 8336 / 8736 (Indusoft & ISaGRAF controller)
- Other WinCon controllers with "Modbus Server" enabled