



## *FAQ for ECAT-2000*

---

1. How to make Beckhoff Configurator or TwinCAT recognize ECAT-2000? ..... 1
2. How to scan ECAT-2000 in Beckhoff Configurator or TwinCAT? ..... 2

## 1. How to make Beckhoff Configurator or TwinCAT recognize ECAT-2000?

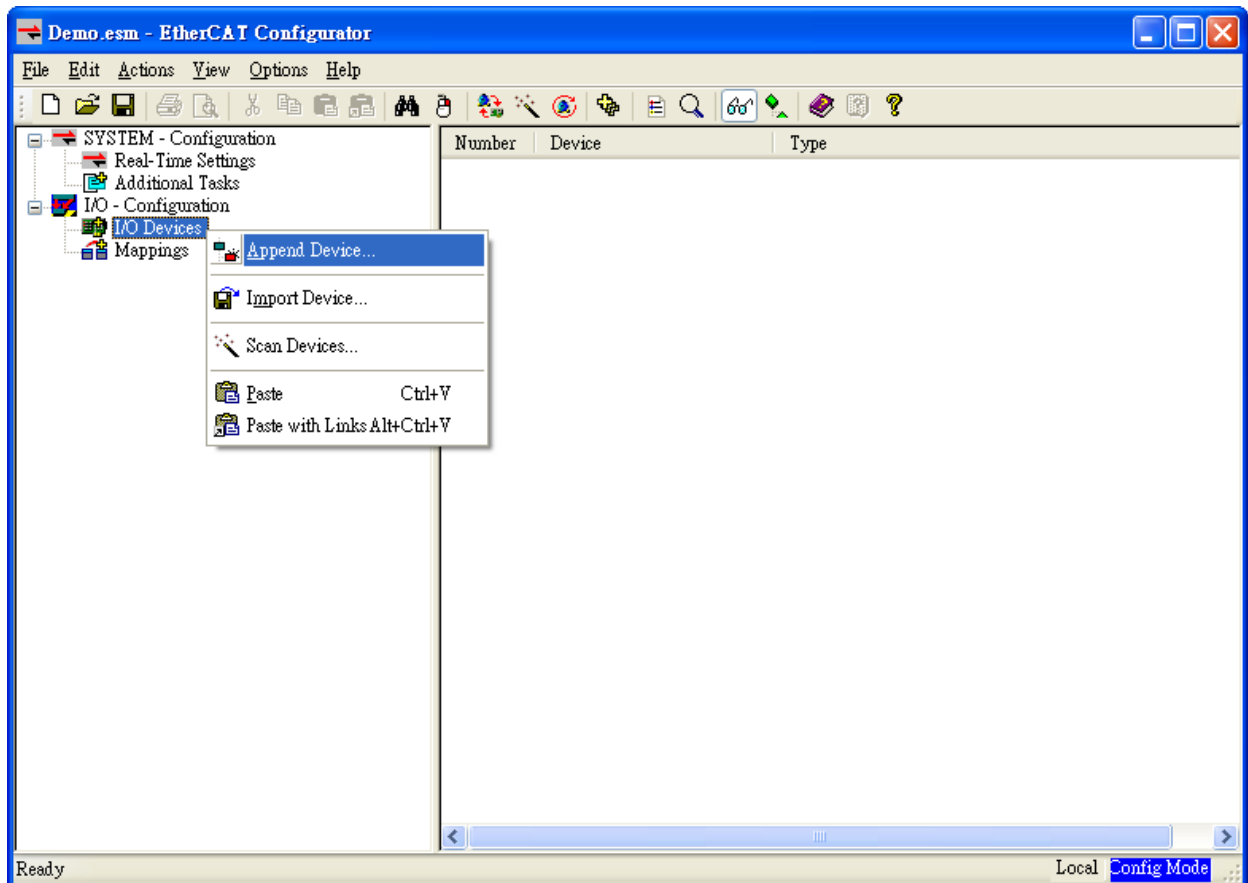
EtherCAT devices are described in an XML file, ESI (EtherCAT Slave Information) file, which describes the modules of the ECAT-2000 series named "**ICPDAS ECAT-2000.xml**."

1. Download the ESI file, **ICPDAS ECAT-2000.xml**, from the website [http://ftp.icpdas.com/pub/cd/fieldbus\\_cd/ethercat/slave/ecat-2000/software/](http://ftp.icpdas.com/pub/cd/fieldbus_cd/ethercat/slave/ecat-2000/software/) or from the CD in the shipping package  
CD: \fieldbus\_cd\ethercat\slave\ecat-2000\software
2. Copy the file "**ICPDAS ECAT-2000.xml**" to the destination folder of EtherCAT Master Tools(**Beckhoff EtherCAT Configurator** or **TwinCAT** etc.)  
C:\EtherCAT Configurator\EtherCAT\ICPDAS ECAT-2000.xml  
C:\TwinCAT\Io\EtherCAT\ICPDAS ECAT-2000.xml  
Otherwise, if you are using another tool, to the folder set for that tool.

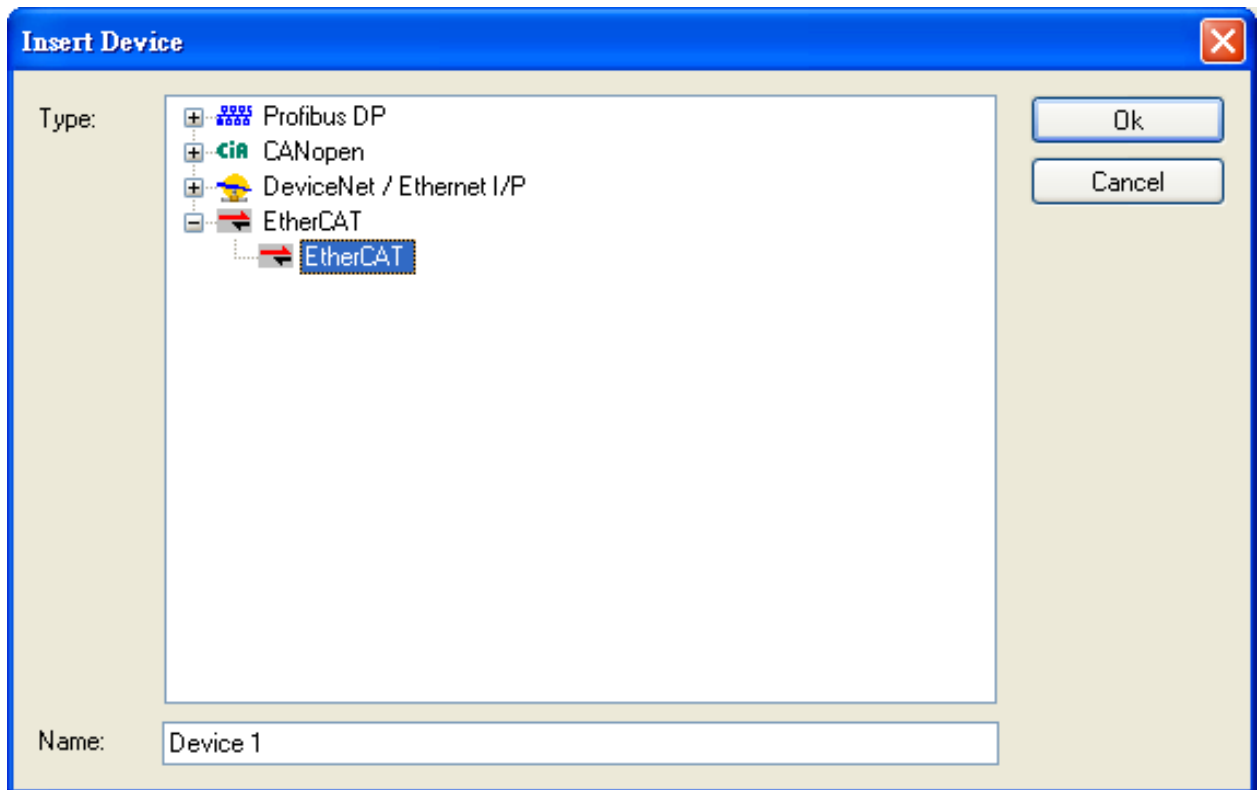
## 2. How to scan ECAT-2000 in Beckhoff Configurator or TwinCAT?

This part is described the configuration using the example of ECAT-2055 and the *EtherCAT Configurator* supplied by Beckhoff.

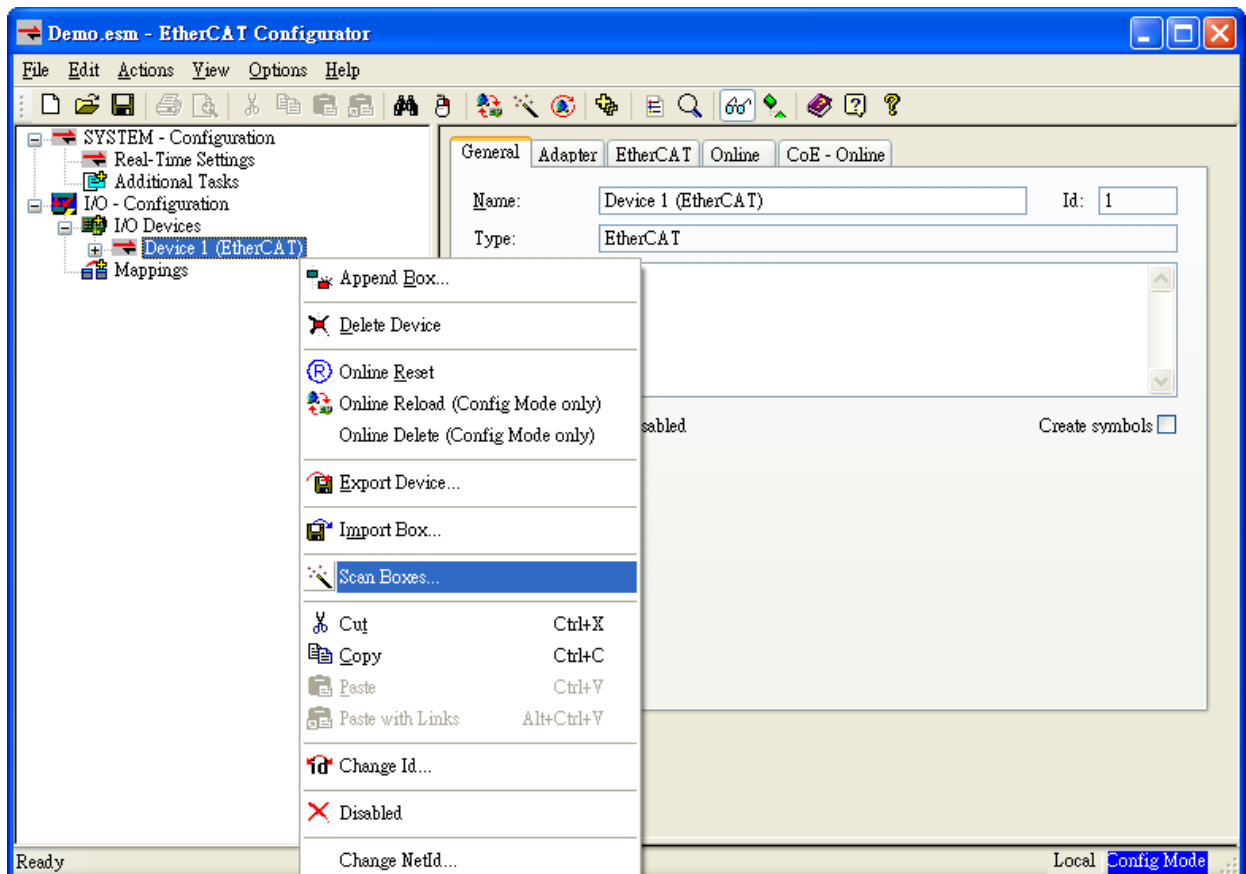
1. Start your *EtherCAT Configurator*.
2. Choose File, New to create a new I/O Configuration.
3. Click *I/O Device* with the right mouse button and choose *Append Device...* in the menu, and then the dialog window Insert Device is opened.



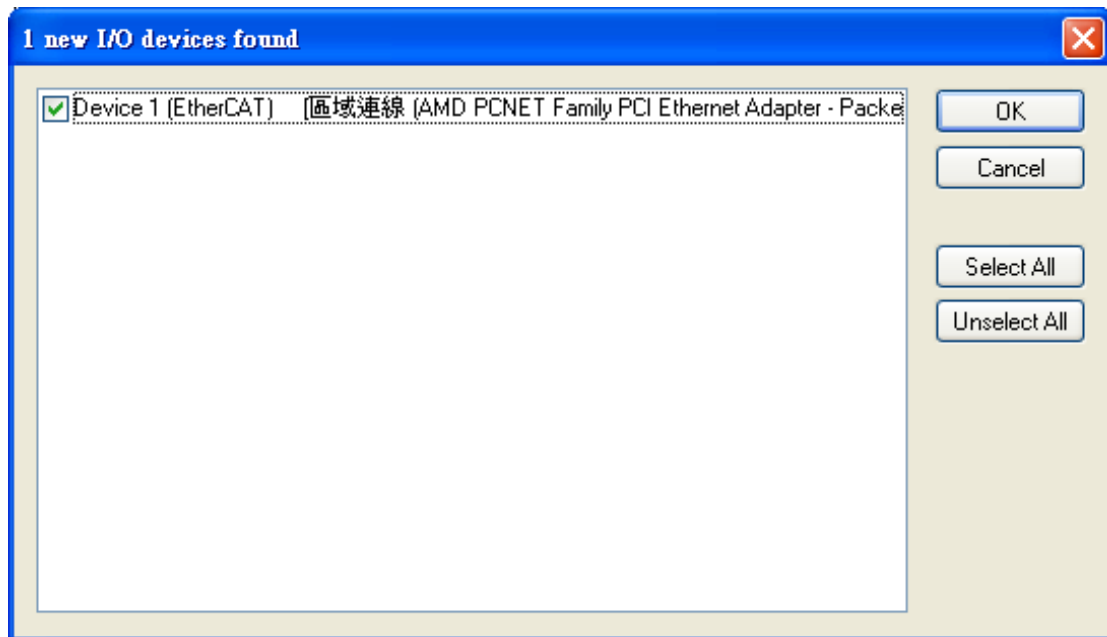
4. Select the **EtherCAT** type in this dialog window and confirm with **OK**.



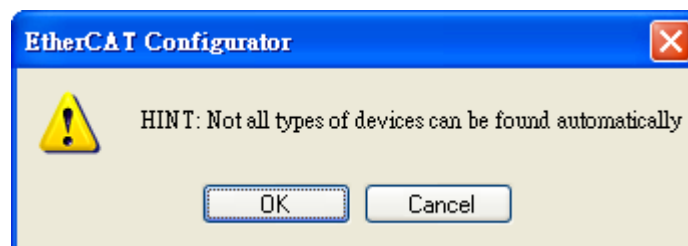
5. **Device 1 (EtherCAT)** is added to to your configuration, i.e. a new EtherCAT line. Click **Device 1(EtherCAT)** with the right mouse button and choose **Scan Boxes...** in the menu.



6. Choose the correct network device which is connected to ECAT-2000.



7. If the hint is shown, click **Yes/OK** and continue.



8. Click **Yes** to start scanning for ECAT-2000.



9. Click **Yes** to activate the free run mode for EtherCAT Configurator.



10. The **ECAT-2000 (Box 1)** is now shown in the EtherCAT Configurator.

