

## I-7241D / I-7242D FAQ

Q1 、 Why doesn't the CAN_GW Utility find the DCON modules connected with I-7241D ? (2011/02/08,Andy).....	2
Q2 、 Why do I-7241D show default mode not normal mode on 7-segment LED after finishing the I-7241D configuration ? (2011/02/08,Andy).....	2
Q3 、 How do I know that I-7241D works correctly ? (2011/02/08,Andy) .....	2
Q4: Why the Utility can not find the I-7K/87K modules which the address are setting large than number 15? (2011/02/08, Andy).....	3
Q5: What the I-7K/87K/8K modules that the device supported? (2011/02/08, Andy) .....	3
Q6: May I use SCADA software with Modbus driver to control the DeviceNet device by using I-7242D ? (2011/02/08, Andy) .....	3
Q7: How do I know that I-7242D works correctly ? (2011/02/08, Andy) .....	3
Q8: How can I save all the configuration of the module and load these setting into the other device? (2011/02/08, Andy).....	4
Q9: How can I get the Modbus command error status of I-7242D via DeviceNet protocol? (2011/04/02, Andy).....	5
Q10: How can I get the Modbus command error counter of I-7242D via DeviceNet protocol? (2011/04/02, Andy).....	5
Q11: How can I know what the I-7K/87K modules that the I-7241D supported? (2011/06/12, Andy).....	6
Q12: Why does the I-7241D appear an error code "1E" in module when we want to connect one more I-7K module with it?? (2012/12/25, Andy) .....	6

**Q1 、 Why doesn't the CAN\_GW Utility find the DCON modules connected with I-7241D ? (2011/02/08,Andy)**

A:

Before using I-7241D Utility tool to find and set the parameters of I-7241D, users must use DCON Utility tool to set the DCON module. After finishing the DCON module configuration, the address of DCON modules must be different from each other, and the baud-rate and checksum must be the same. Then users can search the DCON modules and program the DeviceNet functions of I-7241D by using I-7241D Utility.

(2011/02/08,Andy)

**Q2 、 Why do I-7241D show default mode not normal mode on 7-segment LED after finishing the I-7241D configuration ? (2011/02/08,Andy)**

A:

When powering on I-7241D, it will scan the DCON modules plugged on the I-7241D and compare them with the information configured by the CAN\_GW Utility before. If those scanned modules don't match the configuration information, I-7241D will be on default mode.

(2011/02/08,Andy)

**Q3 、 How do I know that I-7241D works correctly ? (2011/02/08,Andy)**

A:

There are power 、 MS 、 NS 、 IO LEDs on I-7241D. Users can judge the status of I-7241D by checking the conditions of those LEDs on I-7241D. For more information about the meanings of the LEDs, please refer to the section 2.3 and 2.4 of I7241D user's manual.

(2011/02/08,Andy)

**Q4: Why the Utility can not find the I-7K/87K modules which the address are setting large than number 15? (2011/02/08, Andy)**

A:

The device maximum support 15 DCON module.

And The Utility tool will just scan address 1 to 15.

So the address setting of the I-7K or I-87K module must between 1 and 15.

(2011/02/08,Andy)

**Q5: What the I-7K/87K/8K modules that the device supported? (2011/02/08, Andy)**

A:

About the modules, please refer to following web site.

[http://www.icpdas.com/products/Remote\\_IO/can\\_bus/i-7241d\\_list.htm](http://www.icpdas.com/products/Remote_IO/can_bus/i-7241d_list.htm)

(2011/02/08,Andy)

**Q6: May I use SCADA software with Modbus driver to control the DeviceNet device by using I-7242D ? (2011/02/08, Andy)**

A :

No. Because the I-7242D is the Modbus RTU Master/DeviceNet Slave device, and the above structure is Modbus RTU Slave/DeviceNet Master application, it doesn't work.

(2011/02/08,Andy)

**Q7: How do I know that I-7242D works correctly ? (2011/02/08, Andy)**

A :

There are power 、MS 、NS 、IO LEDs on I-7242D. Users can judge the status of I-7242D by checking the conditions of those LEDs on I-7242D.

For more information about the meanings of the LEDs, please refer to the section 2.3 and 2.4 of I7242D user's manual.

(2011/02/08,Andy)

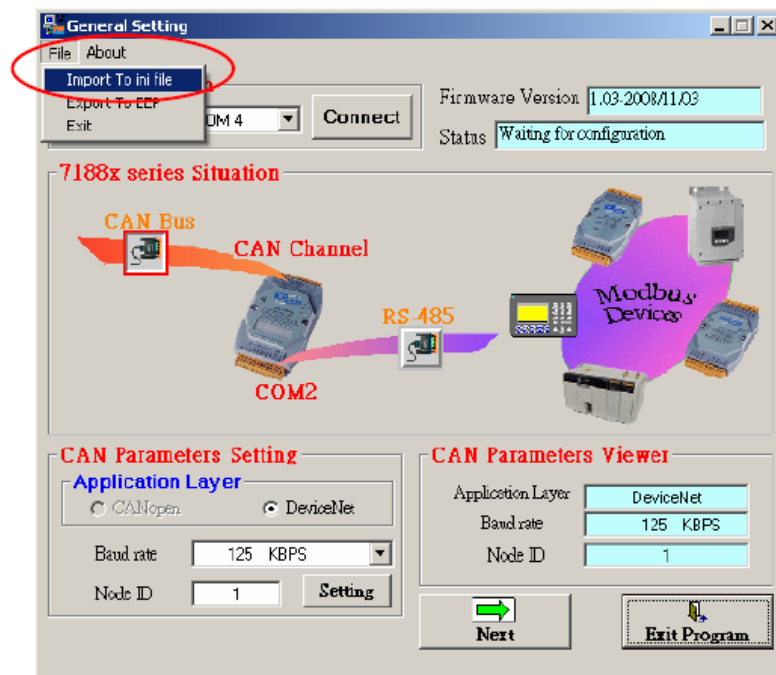


## Q8: How can I save all the configuration of the module and load these setting into the other device? (2011/02/08, Andy)

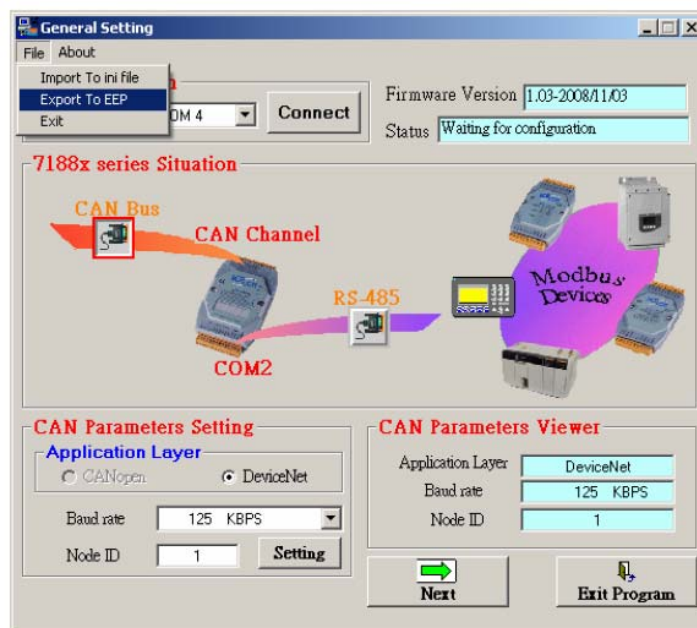
A:

There support Import/export function for user to load/save the module's configuration.

Step1: Press "Import To ini file" button to save module's configuration into an ini file



Step2: Press "Export to EEP" button to load the configuration on the ini file and save these configurations into the other module.



(2011/02/08,Andy)

### **Q9: How can I get the Modbus command error status of I-7242D via DeviceNet protocol? (2011/04/02, Andy)**

A:

1. The "User-defined Modbus Device Object ( Class : 0x64 )" supports "Modbus command Status" attributes on Attribute ID 0x06 of each Instance. The Instance ID of this class (0x64) is mapping to those Modbus RTU commands that you added. Please refer to section 4.10 of user's manual.
2. If the "Modbus command Status" is not equal to zero, it means that some error occurred on this Modbus command. The "Modbus command Status (Attribute ID: 0x06)" attribute are listed below:
  - 0x00: No error
  - 0x01: Timeout error
  - 0x02: Get a EXCEPTION\_CODE
  - 0x03: CRC\_CHECK\_ERROR
  - 0x04: Command length error
3. User can use DeviceNet Set/Get Attribute Single service to get/set the data of this attributes.
4. There also support a hardware DI channel that can let all modbus command status to become to no error after shutting this DI pin with GND pin.

(2012/04/02, Andy)

### **Q10: How can I get the Modbus command error counter of I-7242D via DeviceNet protocol? (2011/04/02, Andy)**

A:

1. The "User-defined Modbus Device Object ( Class : 0x64 )" supports " Data Lose Counter" attributes on Attribute ID 0x05 of each Instance. The Instance ID of this class (0x64) is mapping to those Modbus RTU commands that you added. Please refer to section 4.10 of user's manual.
2. User also can check the "Data Lose Counter (Attribute ID: 0x05)" to check whether there is no command response from the Modbus slave device.
3. When there is no command response from the Modbus slave device, the "data lose counter" will increase once per command sent to the Modbus slave device.
4. User can use DeviceNet Set/Get Attribute Single service to get/set the data of this attributes.
5. There also support a hardware DI channel that can let all modbus command status to become to no error after shutting this DI pin with GND pin.

(2012/04/02, Andy)

**Q11: How can I know what the I-7K/87K modules that the I-7241D supported? (2011/06/12, Andy)**

A:

The modules that I-7241D supported are listed in following web site.

[http://www.icpdas.com/products/Remote\\_IO/can\\_bus/i-7241d\\_list.htm](http://www.icpdas.com/products/Remote_IO/can_bus/i-7241d_list.htm)

(2012/06/12, Andy)

**Q12: Why does the I-7241D appear an error code "1E" in module when we want to connect one more I-7K module with it?? (2012/12/25, Andy)**

A:

The error code "1E" means there is an error occurred when scanning these I-7K modules that I-7241D connected.

1. Please make sure the latest I-7K module's ID is different to the other ones and the communication is matched to the other modules that already connected with I-7241D.
2. Before using the I-7K modules, please setting them by using DCON Utility tool to prevent duplicated ID error problem. User can download it from following location.  
[http://ftp.icpdas.com/pub/cd/8000cd/napdos/driver/dcon\\_utility/](http://ftp.icpdas.com/pub/cd/8000cd/napdos/driver/dcon_utility/)

(2012/12/25, Andy)